

## SRQ catalogue card

### GENERAL CHARACTERISTICS

SRQ3d - three-way valve ON / OFF with electric actuator is mounted in supply pipe of heat exchanger. It allows cutting off the flow of heating water and at the same time it is redirecting the hot water stream directly into a return pipe

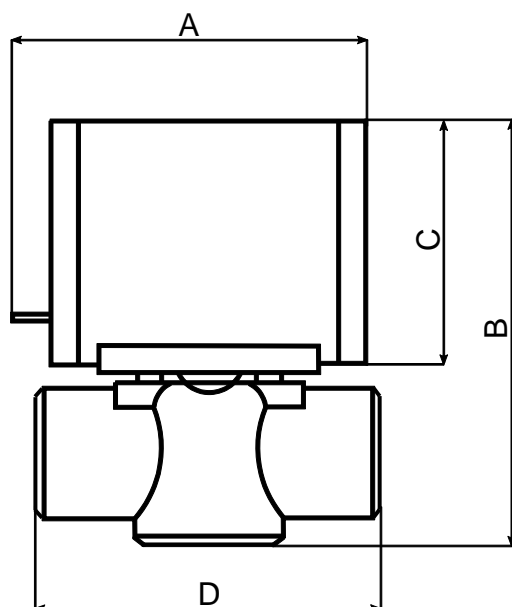
SRQ2d – two-way ON/OFF valve with electric actuator is mounted on return pipe of heating water, it allows cutting off the flow of heating agent.

SRQ valves operate with RA and RE room thermostats as well as with VNTLCD and VNT20 control panels..

### TECHNICAL DATA

	Weight	Power supply	Kvs [m <sup>3</sup> /h]	Opening / closing time	IP	Max. operation pressure	Max. water temperature
SRQ2d 1/2"	0,75kg	230V/50Hz	3,0m <sup>3</sup> /h	18s/5s	20	2,1MPa	93°C
SRQ2d 3/4"	0,90kg		3,0m <sup>3</sup> /h				
SRQ3d 1/2"	0,80kg		3,4m <sup>3</sup> /h				
SRQ3d 3/4"	0,95kg		6,5m <sup>3</sup> /h				

### BASIC DIMENSIONS



	A [mm]	B [mm]	C [mm]	D [mm]
SRQ2d 1/2"	97	108	62	70
SRQ2d 3/4"	97	122	62	70
SRQ3d 1/2"	97	122	62	87
SRQ3d 3/4"	97	110	62	94